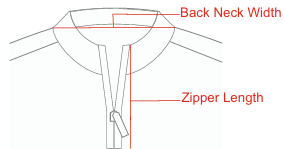
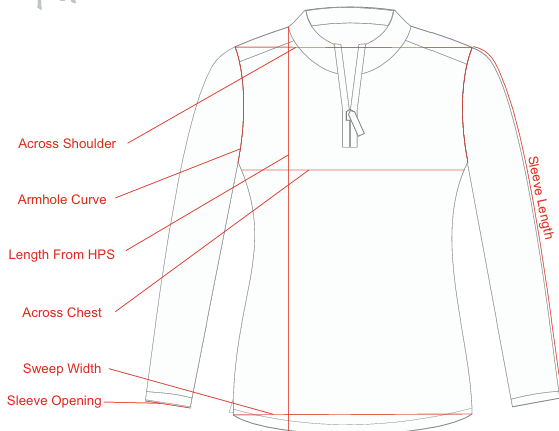






## HORN LEGEND WOMEN'S 1/4 ZIP PULLOVER, HOW TO MEASURE SIZE



WE TYPICALLY ADVISE SIZING DOWN FOR OUR GARMENTS AS THEY TEND TO RUN LARGE, EXCEPTIONS INCLUDE TALLER INDIVIDUALS OR THOSE WITH LARGER MIDSECTIONS, WHO MAY PREFER THEIR REGULAR SIZE FOR ADDED COMFORT.

ALL MEASUREMENTS IN INCHES

MEASUREMENT POINTS	XS	S	M	L	XL	2XL	3XL	4XL	5XL
Length from HPS	25 1/2	26 1/4	27	27 5/8	28 1/4	28 3/4	29 1/4	29 3/4	30 1/4
Across Chest	18 1/4	9 1/4	20 1/4	21 3/4	23 1/4	24 3/4	26 1/4	26 3/4	29 1/4
Sweep Width	17 3/4	18 3/4	19 3/4	21 1/4	22 3/4	24 1/4	25 3/4	27 1/4	28 3/4
Across Shoulder	14 1/2	15 3/8	16 1/4	17 1/2	18 3/4	20 1/8	21 1/2	22 7/8	24 3/8
Sleeve Length	22 1/4	22 3/4	23 1/4	23 3/4	24 1/4	24 3/4	25 1/8	25 1/2	25 7/8
Armhole Curve	8 1/2	9	9 1/2	10	10 1/2	11			
Sleeve Opening	3 3/4	3 7/8	4 1/8	4 1/4	4 3/8	4 1/2	4 3/4	5	5 1/4
Back Neck Width	6 3/4	7	7 1/4	7 1/2	7 3/4	8	8 1/4	8 1/2	8 3/4